

NetDVMS

IP-Based Network Video Recorder (NVR)

The World's Leading NVR and Camera Management Platform

NetDVMS is OnSSI's market-leading multi-site/multi-server Network Video Recorder and Camera Management Platform, featuring extensive live video, archive and event management, powerful investigation tools, and multiple video clients to assure the delivery of video from any camera to any user – anytime, anywhere.

NetDVMS is a key component in the OnSSI Platform, a comprehensive IP Video Surveillance software solution geared toward automated event detection and intelligent video delivery through convergence with physical security systems and advanced content analytics.

The Power of IP-Based Video Surveillance IP-Based surveillance means that cameras can be securely monitored, recorded, administered and accessed from any authorized workstation or portable device within the local network or over the Internet. With NetDVMS, the most powerful IP-based solution by far, OnSSI has established its leadership in the new era of surveillance management systems.

Features. Simplicity. Flexibility. Position any number of PTZ cameras anywhere on the network, wired or wireless, without the need for video matrixes, multiplexers or switches. Full resolution images from any or all cameras can be recorded and stored to any location on the network. Cameras can be accessed and controlled using a wide range of clients - from handheld (NetPDA & NetCell) and web-based to the advanced NetGuard-EVS remote client and the NetSwitcher virtual video matrix. Powerful investigation tools, including digital PTZ into recorded images and time-synchronized playback of video from multiple servers and sites enable accurate and efficient examination of events and exceptions.

Intelligence and Automation Automated event detection and video delivery tools, right out of the box, make NetDVMS the ideal – and most cost-effective – video platform for large-scale, multi-site/multi-server systems. Blank Screen Monitoring enables operating a large number of cameras by few operators, through delivering meaningful video only, thus saving on manpower; and with Push Video, video of events will automatically or manually (peer-to-peer) appear on any user's PC monitor, anywhere on the network. In addition, dedicated content analytics modules can be seamlessly integrated for directional motion detection, no-motion detection, crowd behavior and more.


Universal Camera Support NetDVMS supports practically every IP camera and encoder by all leading manufacturers, as well as all popular video formats - giving you the most flexibility in camera selection. Choose the IP cameras that are right for the job, including HD/Megapixel, 360-degree and specialty cameras, or retrofit your existing analog cameras using video encoders.

Continued

Your Choice of Components


IP and Analog Cameras

PTZ Cameras Megapixel Wireless Analog via Encoder




Security and IT Systems

Fire Alarm Panels Contact Closure Emergency Phones Access Control Point of Sale



Content Analytics and Video Intelligence


Abandoned Object Night Vision Motion Detection Motion Tracking



The OnSSI Platform


NVR/Camera Management

NetDVMS Large-Scale IP Video Surveillance Platform




Video Clients

NetCell NetPDA Web Access NetGuard NetGuard-EVS



Video Matrixes & Central Monitoring

NetSwitcher Video Wall Display Control NetMatrix Push-Live Video NetCentral Alert Monitoring Central NetTransact POS Loss Prevention



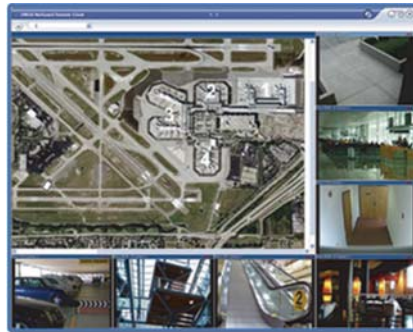
The NetDVMS Advantage

- The most comprehensive solution for large-scale Multi-Site/Multi-Server deployments
- Intuitive map-driven user interface, with Point & Click and Joystick PTZ control
- Support for all leading manufacturers' cameras, including megapixel, 360° and specialty cameras
- 100% digital image quality (CIF to over 32CIF)
- Simultaneous support for MPEG-4, MJPEG, H.263 & Wavelet compression formats
- Multiple video clients for any setting – handheld (PDAs & Cellphones), web access and NetGuard-EVS remote client, as well as NetSwitcher virtual video matrix switch.
- Standards-Based, Open Architecture on Non-Proprietary hardware
- Powerful investigation tools, including scrollable events timeline, synchronous playback from multiple servers, and PTZ and motion detection within recorded images
- Carousel mode monitoring and Hotspot display
- Dual mode operation - Console mode and Client/Server mode
- Maintenance-free, transparent network archiving
- Active Directory compliant
- Optional operation as Windows® service in background
- Support for VMware & Microsoft Virtual PC®
- Multi-window support for dual & quad screen operation
- Unlimited number of cameras per system
- Free, unlimited NetGuard, NetGuard-EVS, NetPDA and NetCell client licenses
- Up to 8x8 cameras displayed per monitor and multiple monitors with NetGuard-EVS
- Advanced audio capabilities – live and playback audio from cameras' microphones, and audio export together with video in native database format.
- Audible alerting on event in NetGuard-EVS
- Encrypted, tamper-evident video export to CD or DVD
- Automatic or peer-to-peer Push Video on event and 'Blank-Screen' Monitoring capabilities via included NetMatrix virtual matrix switch
- Alarm input and output integration
- Schedulable multiple PTZ patrolling sequences
- Open APIs for integration with physical security (access control, contact closure and more) systems
- Regular Software Upgrade Plan (optional), protecting your investment for years to come.

Built for Convergence OnSSI's open-architecture IP-Video platforms allow for seamless convergence with security, retail and other organizational systems. Simple-to-use APIs enable integrating NetDVMS with Access Control, Contact Closure, Fire Alarm Panels, Emergency Phones and most any other IP-based systems, to create a true alarm, alert and event management system.



NetGuard-EVS - Multi-Camera Synchronous Playback



NetGuard-EVS - Live View with Map-Driven Interface

Uncompromising Distributed Access to Video NetDVMS serves as a gateway to multiple video clients. OnSSI's intuitive map-driven remote client, NetGuard-EVS, provides access to multiple cameras from multiple NetDVMS servers. Multi-grid view-sets and static or active-HTML map-driven interfaces allow instant access to view-sets or cameras. NetGuard-EVS enables multiple screen display, video on alarm, carousel display, Alert View and hotspot functionalities. Any number of Alert View windows can be assigned in the video grid, for receiving Push Video on event; and video from any camera can be manually pushed to other NetGuard-EVS clients, NetMatrix Viewers or NetSwitcher displays, directly from NetGuard-EVS. Powerful investigation tools include time-synchronous video viewing and playback, motion smart search, event generation, and digital PTZ into playback.

The NetGuard Client offers effective remote access from any location, with no software download required – ideal for law enforcement or casual access to cameras. NetPDA and NetCell are WiFi and smartphone cellular-enabled portable clients, providing access to live and recorded video, including full PTZ control, while on the move. Finally, NetSwitcher, OnSSI's innovative virtual video matrix switch (optional), enables sending any camera stream to any video wall display monitor or PC screen, on or off premises, with advanced investigation capabilities and shared management of content analytics-generated events.

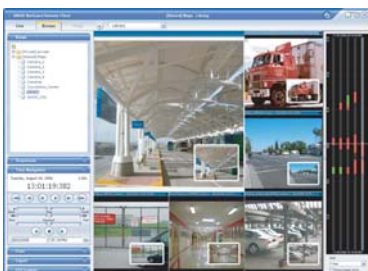
All of OnSSI's remote access solutions incorporate a multi-tiered access authorization scheme. Specific cameras and functions can be assigned or restricted for use by specific users by the system administrator.



NetPDA & NetCell
PTZ-enabled Handheld IP Video clients/controllers



NetSwitcher (optional)
Virtual video matrix switch software platform



NetGuard-EVS
Graphical motion detection timeline and PIP (Picture-In-Picture) assisted PTZ



NetGuard Remote Client
Configurable shared and private views for easy access to cameras

Continued



Automatic or manual (peer-to-peer) Push Video on event to NetGuard-EVS clients, NetMatrix Viewers or NetSwitcher virtual video matrix switch displays

Video Intelligence and Content Analytics With more video content streaming from ever-growing numbers of cameras, the challenge has shifted to overcoming the overflow of data and efficiently receiving meaningful video only by the same number of security operators. NetDVMS's native Motion Detection capabilities and open-standards connectivity with physical security devices enable detecting events and exceptions, based on rules, automatically, and in real time. Powerful Content Analytics modules (optional) add a higher level of recognition of exceptions and movement patterns, including directional movement, unattended objects and vehicles, motion tracking, crowd behavior and more. The result is a streamlined process of automatic detection of events and exceptions that are streamed to users - automatically - through intelligent remote, web and mobile video clients/controllers.

Archive Smart-Search and Production of Evidence NetDVMS's intuitive playback control interface enables instantaneous retrieval of archived video, by Camera, Time/Date and/or Motion Events. Investigating a stolen laptop incident? Just mark the area of the missing laptop in the camera's field of view and let the system do the work for you. NetDVMS will automatically identify any suspicious motion within the specific area. Creating the actual evidence is just a few clicks away. You can produce an AVI file viewable by any PC user, or export an encrypted password-protected, tamper-evident video file.

Protecting Your Investment Unlike the "forklift upgrade" model created by old-school DVR manufacturers, OnSSI offers an optional Software Upgrade Plan that will keep your system current with the latest features and functionalities. And as a 100% non-proprietary solution, upgrading to the latest NVR is just a software upgrade away, with no new hardware required.

Setting the benchmark for IP Video Surveillance With thousands of installations worldwide and more city-wide and multi-site deployments than any other IP Video Surveillance software platform, NetDVMS has become the standard for law enforcement installations, local and federal government agencies, corporate installations and school districts worldwide.

Ordering information

- NetDVMS-Base
Master software license
- SUP-NetDVMS-Base-1Y
SUP-NetDVMS-Base-2Y
SUP-NetDVMS-Base-3Y
1, 2 or 3-year Software Upgrade Plan for NetDVMS-Base (optional)
- NetDVMS-1C
Single camera license
- SUP-NetDVMS-1C-1Y
SUP-NetDVMS-1C-2Y
SUP-NetDVMS-1C-3Y
1, 2 or 3-year Software Upgrade Plan for NetDVMS-1C (optional)

Minimum hardware requirements

Workstation and Server requirements depend on camera count, frame rate and resolution. For complete updated recommendations, please visit our website at www.onssi.com.

Related products from OnSSI

- NetGuard
Browser-based remote video client for NetDVMS
- NetGuard-EVS
Enhanced, .NET-based 64-camera multiple-screen client for NetDVMS
- NetPDA
Portable Video Client
- NetCell
Portable Video Client
- Free NetGuard, NetGuard-EVS, NetPDA and NetCell client licenses are available for an unlimited number of users with the NetDVMS-Base license.
- NetMatrix
Automatic Event-Driven Push Live Video
- NetMatrix Server is included in the NetDVMS-Base license.
- NetSwitcher
Virtual Video Matrix Switch/Video Wall Management System

© 2002-2007 On-Net Surveillance Systems, Inc. All rights reserved. NetDVMS, NetDVR, NetGuard, NetGuard-EVS, NetSwitcher, NetMatrix, NetCentral, NetTransact, NetPDA and NetCell are trademarks of On-Net Surveillance Systems, Inc. All other trademarks are property of their respective owners. On-Net Surveillance Systems, Inc. reserves the right to change product specifications without prior notice. DVMS-0807